

# PERCENT OF CATCHMENTS CLASSIFIED AS "OPEN" IN CLAMS88

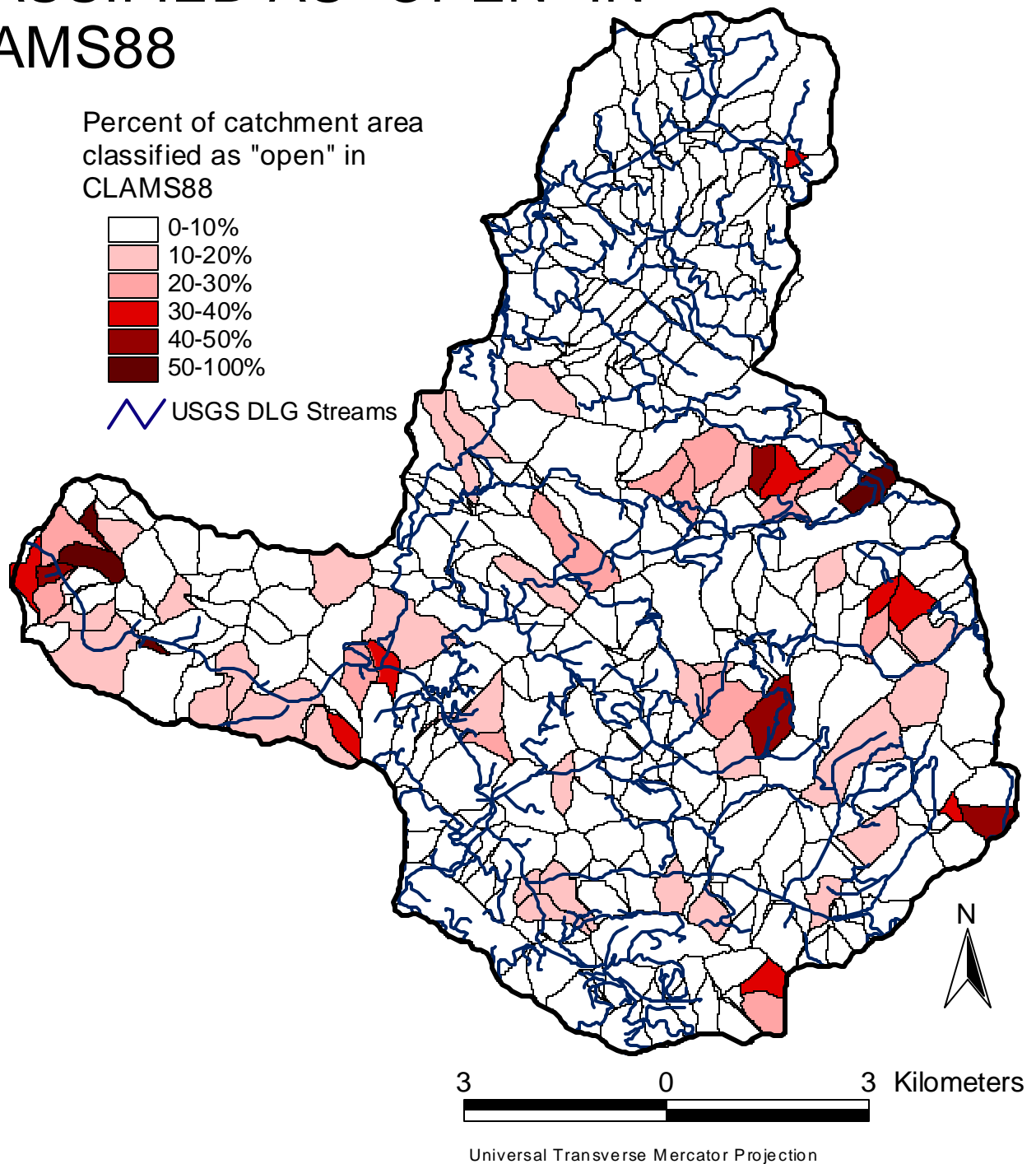


Figure 3.12. Percent of catchment area classified as "open" in CLAMS88 data.

 <p>Earth Design Consultants, Inc. 800 NW Starker, Suite 31 Corvallis, OR 97330 (541) 757-7896 <a href="http://www.earthdesign.com">http://www.earthdesign.com</a></p>	 <p>Green Point Consulting 2625 NW Mulkey Avenue Corvallis, OR 97330 (541) 752-7671 <a href="http://www.peak.org/~brophy/">http://www.peak.org/~brophy/</a></p>
--	--