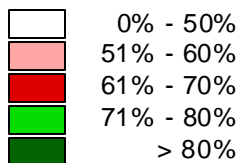


# PROPORTION OF RIPARIAN ZONE OCCUPIED BY "MIXED FOREST/LARGE CONIFERS"

Proportion of Riparian Zone Occupied by "Mixed Forest/ Large Conifers"



 USGS DLG Roads

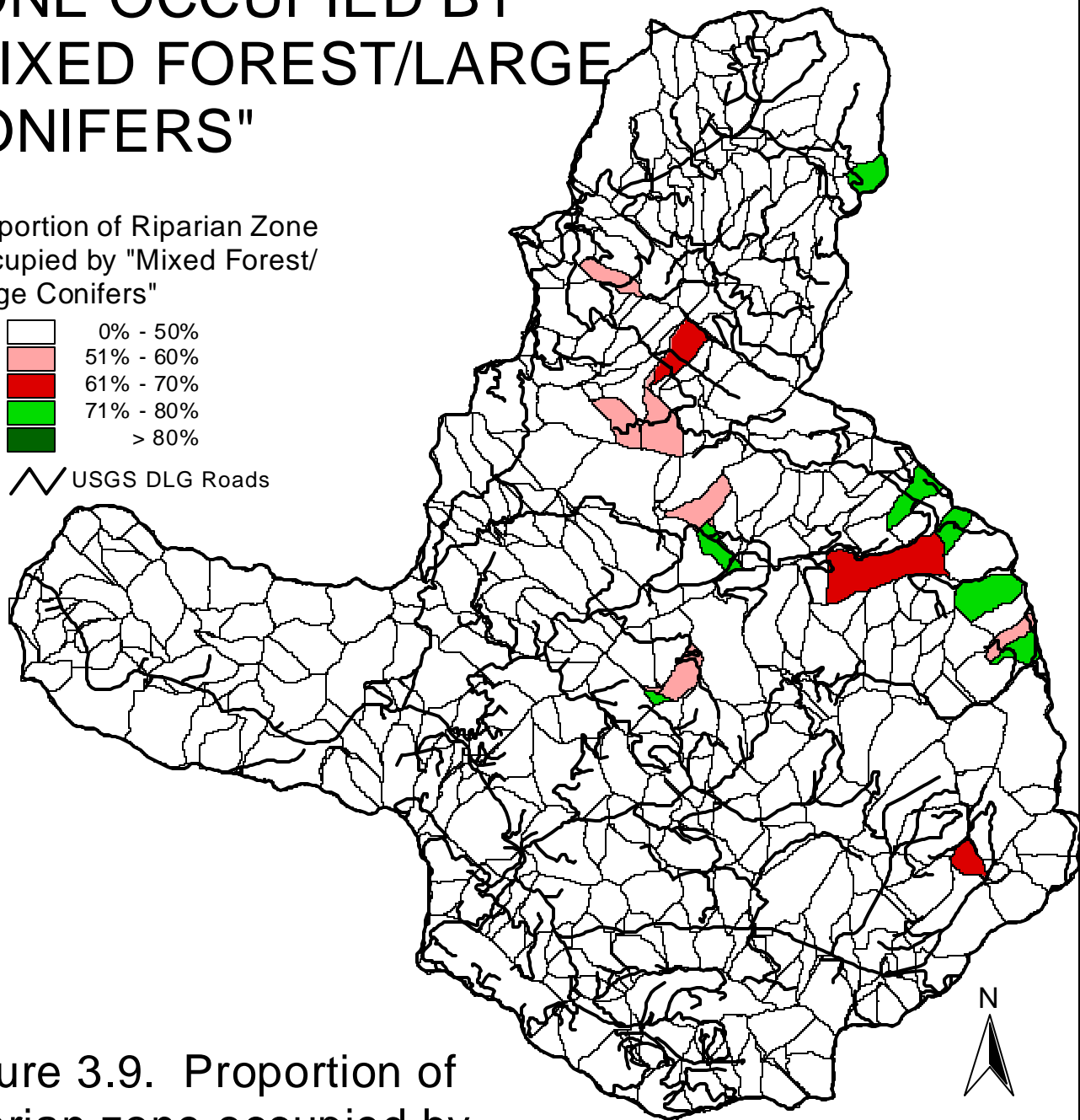



Figure 3.9. Proportion of riparian zone occupied by "Mixed Forest/Large Conifers", by catchment. Based on CLAMS88. There were no catchments in the 80% category.

1 0 1 2 3 Kilometers



Universal Transverse Mercator Projection

 <p>Earth Design Consultants, Inc. 800 NW Starker, Suite 31 Corvallis, OR 97330 (541) 757-7896 <a href="http://www.earthdesign.com">http://www.earthdesign.com</a></p>	 <p>Bran Point Consulting 2625 NW Mulkey Avenue Corvallis, OR 97330 (541) 752-7671 <a href="http://www.peak.org/~brophy/">http://www.peak.org/~brophy/</a></p>
--	---