

PROPORTION OF CATCHMENT THAT IS OVER 1000 FEET AND OPEN

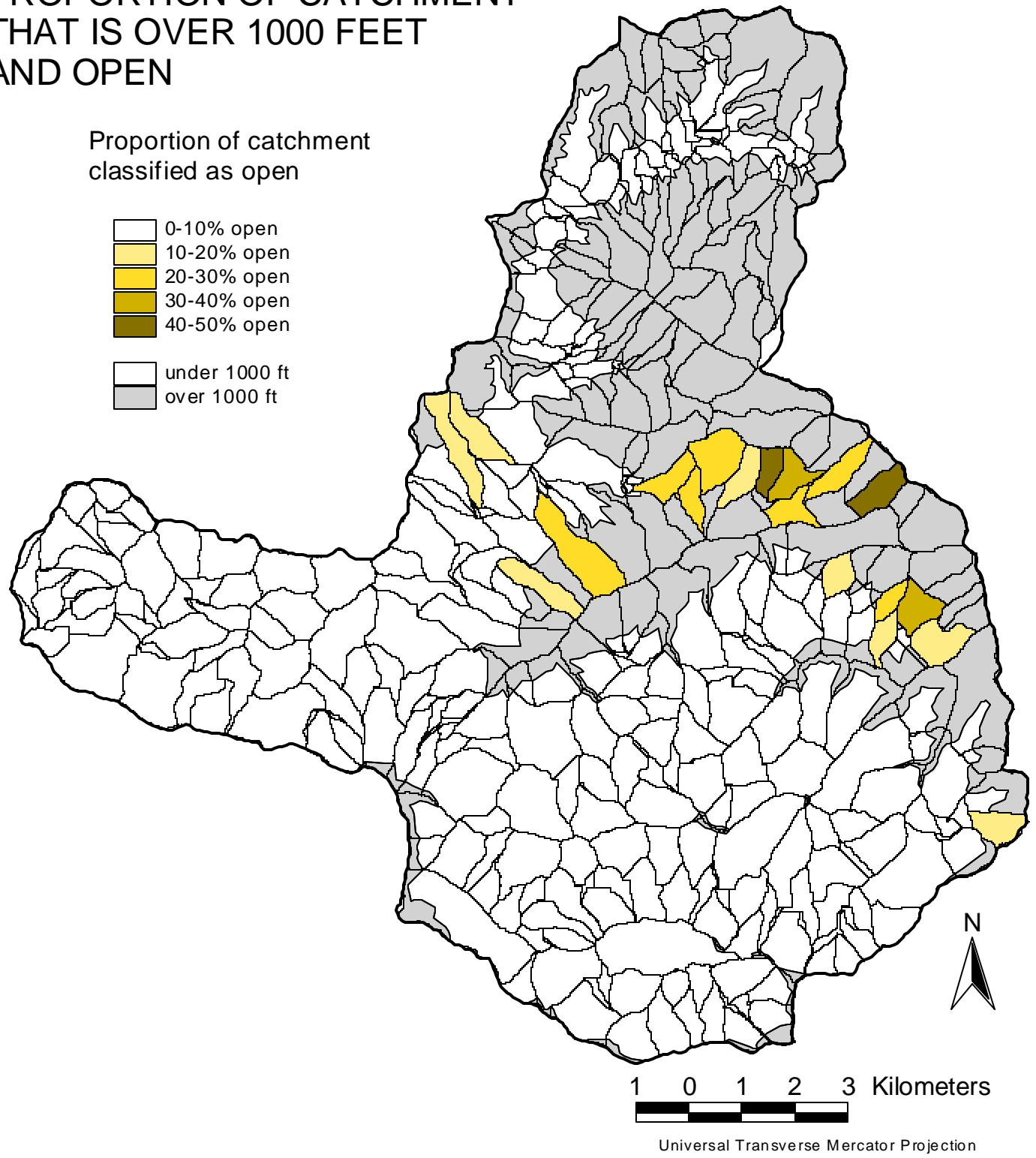


Figure 7.1. Proportion of catchment that is over 1000 ft and open. Based on CLAMS88 and 10 m DEM.

	Earth Design Consultants, Inc. 800 NW Starker, Suite 31 Corvallis, OR 97330 (541) 757-7896 http://www.earthdesign.com		Green Point Consulting 2625 NW Mulkey Avenue Corvallis, OR 97330 (541) 752-7671 http://www.peak.org/~brophy/
	Universal Transverse Mercator Projection		