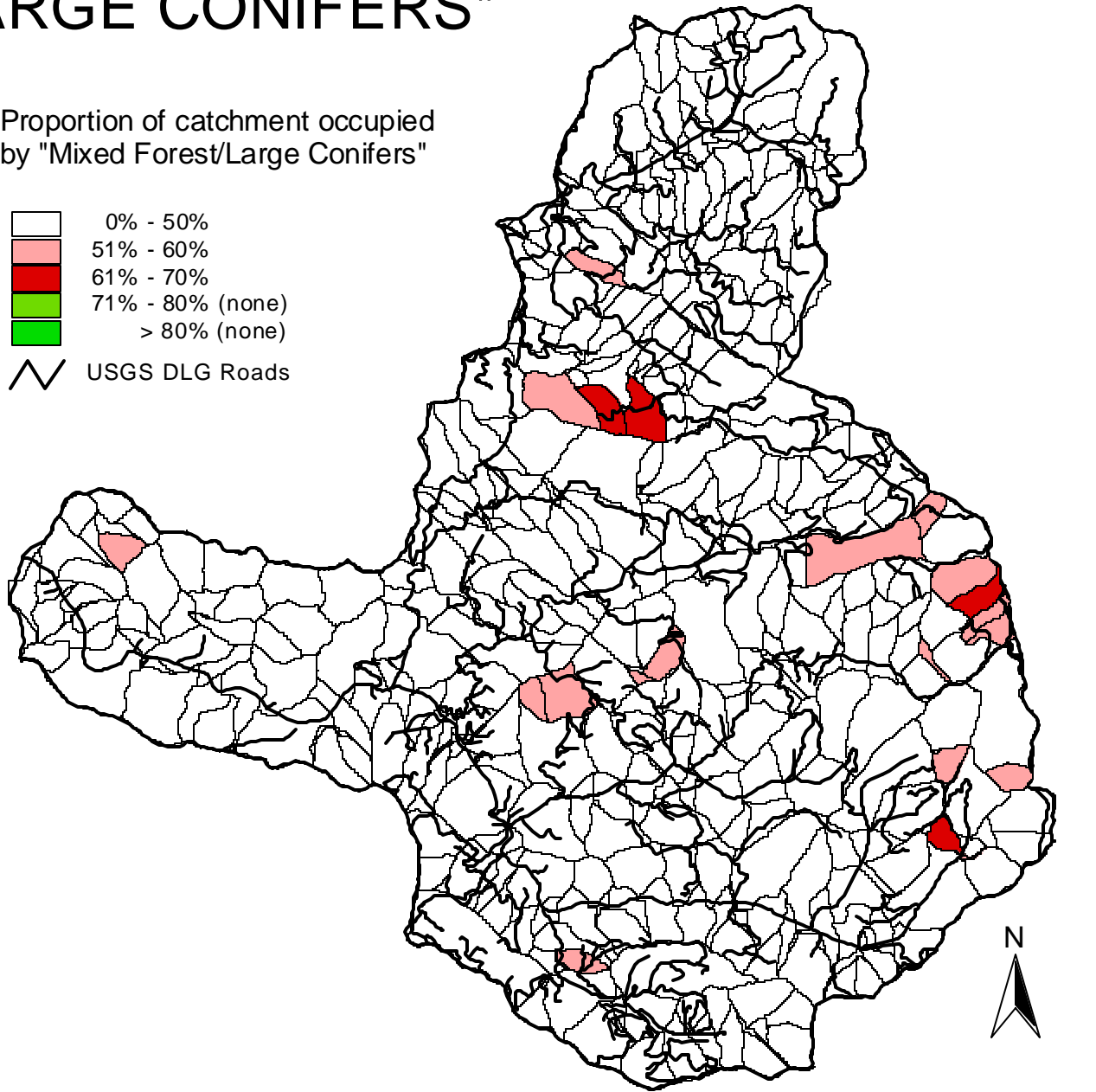
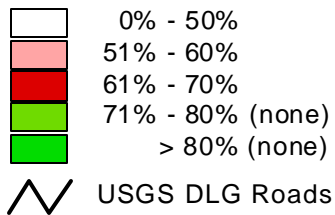


PROPORTION OF CATCHMENT OCCUPIED BY "MIXED FOREST/ LARGE CONIFERS"



Proportion of catchment occupied by "Mixed Forest/Large Conifers"



3 0 3 Kilometers

Universal Transverse Mercator Projection

Figure 3.7. Proportion of catchment occupied by "Mixed Forest/Large Conifers". There were no catchments in the 71-80% or > 80% categories.

<p>Earth Design Consultants, Inc.</p>  <p>800 NW Starker, Suite 31 Corvallis, OR 97330 (541) 757-7896 http://www.earthdesign.com</p>	<p>Green Point Consulting</p>  <p>2625 NW Mulkey Avenue Corvallis, OR 97330 (541) 752-7671 http://www.peak.org/~brophy/</p>
---	---